

Norwegian dog food enriched by Norwegian nature

For world champions  
and those who are simply  
the best in the world



**Appetit**

Enriched by Norwegian nature



# Appetitt - Enriched by Norwegian nature!

Healthy nutrition yields long-lasting health benefits, and a good diet is essential for a long and healthy dog life. Appetitt offers a wide range of dog foods, perfectly adapted to the needs of your dog.

Appetitt is made mainly of high-quality Norwegian ingredients, enriched by Norwegian nature!



## Developed and manufactured in Norway

The Appetitt brand is a result of long experience in feed production, research, and product development with basis in international norms and recommendations. Our large network of veterinarians, breeders, and research institutions contribute with expertise and insight. All so that we can develop and produce the very best food for your dog!

Appetitt is produced in Norway in Vaksdal, just outside Bergen.

In Norway, we have strict quality requirements for ingredients used in food intended for human or animal consumption. We have zero tolerance for salmonella and the use of genetically modified ingredients.

Very good health status of livestock and the restrictive use of antibiotics in Norwegian animal husbandry mean that the incidence of antibiotic resistant bacteria in feed ingredients is virtually non-existent.



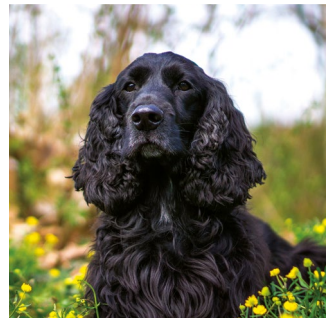
**PUPPY**  
9-11



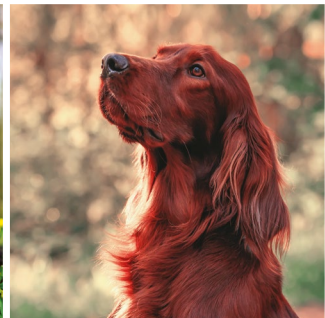
**MAINTENANCE**  
12-13



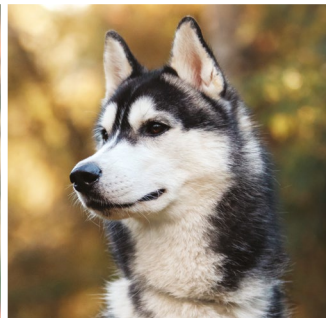
**SENSITIVE**  
14-19



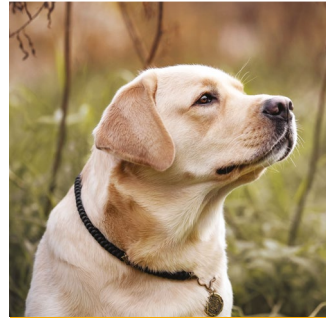
**SKIN&COAT**  
20



**ENERGY**  
21



**EXTREME**  
23



**LIGHT**  
24



**SENIOR**  
25



**WET FOOD AND SUPPLEMENTS**  
26

Ingredients and functional ingredients ..... 4-5  
 General feeding advice ..... 6  
 Nutritional facts ..... 30-31



## Good digestion depends on a properly formulated dog food!

In all animals, the purpose of the digestive system is to break down large complex nutrients into simple, small compounds that can be absorbed into the body, transported to the various tissues, and used by the cells. Originally – or before dogs became our pets – a dog's diet consisted of prey made up mainly of proteins and fats. The intestines of the prey were also eaten, and dogs are thus to some extent adapted to the digestion of carbohydrates. However, a dog's digestive tract is short and dogs should therefore consume concentrated food with readily available nutrients, i.e., "high digestibility", thereby ensuring that their nutritional needs are met.

When dog food is digested, fats in the food are broken down into glycerol, fatty acids and some mono- and di-glycerides, which are then absorbed through the intestinal wall. Complex carbohydrates are split into simple sugars such as glucose, fructose and galactose. Proteins are broken down ("hydrolysed") into amino acids and some short peptides. The quality of the proteins is primarily determined by the content of essential amino acids and how digestible or accessible these are for the dog. It does not matter how high-protein a dog food is if the amino acid composition is not properly balanced. When the protein has "high biological value", the amino acid composition is correct and the protein is highly digestible. Appetitt covers all these bases!

## Hydrolysed protein



Hydrolysed protein is protein that is broken down into smaller pieces and consists of both free amino acids and shorter peptides. This means that the protein has high digestibility and thus highly available to be metabolised in the body. When protein is hydrolysed, it consists of shorter fragments than a protein that is not hydrolysed. A shorter protein fragment can more easily "evade" the immune system, an attribute that can be beneficial if a dog is sensitive or has allergies.

## Norwegian fish oil



Norwegian fish oil contributes the vital omega-3 fatty acids EPA and DHA.

## Beta-glucans



A natural product from yeast cell walls. Beta-glucans support your dog's immune system and contribute to good health. Beta-glucans are especially important for dogs who are under stress or have impaired immune systems, such as during weaning or aging, or during extensive training or hunting.

## FOS



Fructo-oligosaccharides (FOS) digested by bacteria in the small and large intestine can promote the growth and establishment of good bacteria and microbes in the digestive tract.

## MOS



Mannan-oligosaccharides (MOS) might help reduce the risk of the establishment of unwanted bacteria in the intestine.

## Antarctic krill



Krill contribute with top-quality, highly digestible protein and are also an excellent and effective source of omega-3. The content of the

essential omega-3 fatty acids EPA and DHA in krill is very high compared to other available marine ingredients. In addition, the omega-3 fatty acids in krill are water-soluble - and are thus absorbed faster and more efficiently in the body than those from traditional omega-3 sources such as fish oil. In addition, krill contain natural glucosamine, a functional substance that can have a positive effect on the bone and joint health of animals.

The krill meal in Appetitt comes from sustainable fishery and is certified by the Marine Stewardship Council (MSC) as sustainable and 100% traceable. MSC requirements meet global best practice guidelines for certification and ecolabelling programmes.

## Glucosamine and chondroitin



Glucosamine and chondroitin are found in cartilage and connective tissue such as joints. They are crucial for building cartilage tissue, retaining moisture and preventing breakdown. Joint disorders and joint pain might be prevented naturally by ensuring adequate consumption of glucosamine and chondroitin through the ingredients in dog food.

## Carnitine



Carnitine is an amino acid that functions in the conversion of fatty acids into usable energy in the cells. Carnitine boosts the metabolism of fat. Furthermore, carnitine might increase energy production and be beneficial for dogs' during performance.

## Natural antioxidants



The natural antioxidants in Appetitt are vitamin E and astaxanthin from Norwegian salmon and krill. Appetitt also uses a natural antioxidant source in the form of rosemary.

## Collagen

Collagen is protein and makes up about 30% of all protein in a dog's body. Appetitt is rich in hydrolysed collagen from chicken and salmon in the form of free amino acids and peptides. Collagen might contribute to the good and healthy development of articular cartilage, tendons, blood vessels, skin, muscles and many other connective tissue structures in the body.

## Rosemary

A natural antioxidant in the dog food.



Other things worth knowing about Appetitt dog food

## Gluten-free recipe

Appetitt follows a gluten-free recipe and the food is grain free apart from rice.





# Some general feeding advice:

Choose a dog food with nutritional content based on your dog's age, size, life stage and activity level.

Dry food can be served dry or soaked in water for about 20 minutes.

Adjust the daily ration according to your dog's activity level and physique. When reading the recommended food rations on the bag, it is important to remember that the amount of food can vary by +/- 20% depending on your dog's activity level. Feel free to divide the daily ration between several feedings per day.

Dogs should always have free access to fresh drinking water.

Keep your dog food dry and preferably slightly cool. A closed container with a lid will help keep the food fresh and tasty for longer.

Remember good hygiene! Wash the dog food bowl between each meal.

High-quality treats and snacks should be given only as a reward, and in limited quantities.

Never give a dog chocolate, sweets, onions or grapes.

# Appetit

Enriched by Norwegian nature



## Did you know?

By scanning the QR code on the back of the dog food bag, you can find more information about Appetitt and the nutritional content of the food.





## Kibble size



The size of the kibble pellets is adapted to small, medium-sized and large dog breeds. For our Skin & Coat, Senior and Light varieties, there are two different kibble sizes for the same type of food, so please refer to the product pages in the brochure for more information.



# PUPPY SMALL BREED

Complete diet for small breed puppies with an adult weight of up to 10 kg

Appetitt Puppy Small Breed is formulated for small breed puppies. The food contains highly digestible proteins of animal and marine origin that are essential for your puppy's growth and development. With the exception of rice, the food is grain free and high in hydrolysed proteins. Thus, the food is low in ingredients that can lead to intolerance and allergies.

The food contains natural antioxidants such as vitamin E and rosemary and with natural glucosamine and chondroitin from marine and animal sources for joint and bone health. Appetitt Puppy also contains Antarctic krill, providing your dog with the vital omega-3 fatty acids, EPA and DHA in the form of phospholipids. The food contains natural antioxidants such as vitamin E and rosemary and with natural glucosamine and chondroitin from marine and animal sources for joint and bone health.

Fructo-oligosaccharides (FOS) from beet fibre for your puppy's gastrointestinal health and beta-glucans for your puppy's overall health.



**TIP:** Appetitt Puppy is well-suited to pregnant and lactating dogs. The rapid energy uptake of the food boosts milk production, contributes to good puppy growth, and reduces the risk of the emaciation of the bitch.

**Feeding guidelines:** The table shows daily food amounts in grammes per day, listed according to your puppy's weight and age.

DOG'S WEIGHT (kg)	1-3 months (g/day)	4-6 months (g/day)	7-8 months (g/day)	9-12 months (g/day)
1 - 3	50-100	60-110	50-95	40-70
3 - 5	100-180	110-150	95-130	70-105
5 - 8		150 - 240	130-200	105-135
8 - 10			200-250	135-175

## Adapted to your dog's size

When your dog reaches its adult weight, we can say that it is a small, medium or large dog. This corresponds to adult weights of up to 10 kilogrammes, between 10 and 25 kilogrammes, and over 25 kilogrammes, respectively. In addition to having different growth rates, small breeds have faster metabolic processes than large breeds. Small breeds therefore require more energy and nutrients per kilogramme of body weight. For large breeds, on the other hand, we must ensure that the puppy does not grow too quickly, so that the development of bones and joints takes place at the right speed.

The ideal supply of energy and protein is therefore lower for large dogs than for smaller dogs, because it prolongs the growth period. Together with the proper supply and ratio of calcium and phosphorus, this ensures the beneficial growth and development of a dog's muscles and skeleton. Puppy food is recommended until a puppy has reached about 90-100 percent of its adult size. For large breeds, this corresponds to about 16-18 months of age. Small breeds reach this size at 10 to 12 months of age.



# PUPPY MEDIUM BREED

Complete diet for medium size breed puppies with an adult weight between 10 and 25 kg

Appetitt Puppy Medium Breed is formulated for medium size breed puppies. The food contains highly digestible proteins of animal and marine origin that are essential for your puppy's growth and development. With the exception of rice, the food is grain free and high in hydrolysed proteins. Thus, the food is low in ingredients that can lead to intolerance and allergies.

The food contains natural antioxidants such as vitamin E and rosemary and with natural glucosamine and chondroitin from marine and animal sources for joint and bone health. Appetitt Puppy also contains Antarctic krill, providing your dog with the vital omega-3 fatty acids, EPA and DHA in the form of phospholipids. Ideal ratio between omega-3 and omega-6 fatty acids and with vitamin E for joints, skin, coat and general health. Fructo-oligosaccharides (FOS) from beet fibre for your puppy's gastrointestinal health and beta-glucans for your puppy's overall health.



**Feeding guidelines:** The table shows daily food amounts in grammes per day, listed according to your puppy's weight and age.

DOG'S WEIGHT (kg)	1-3 months (g/day)	4-6 months (g/day)	7-8 months (g/day)	9-12 months (g/day)
1 - 3	60-130	60-115		
3 - 5	130-200	115-175		
5 - 8	200-270	175-250	140-210	
8 - 10	270-340	250-320	210-270	170-200
10-15	340-400	320-410	270-320	210-230
15-20		410-470	320-400	230-280
20-25			400-450	280-340

# PUPPY LARGE BREED

Complete diet for puppies with an adult weight over 25 kg

Appetitt Puppy Large Breed is formulated for large breed puppies. The food contains highly digestible proteins of animal and marine origin that are essential for your puppy's growth and development. With the exception of rice, the food is grain free and high in hydrolysed proteins. Thus, the food is low in ingredients that can lead to intolerance and allergies.

The food contains natural antioxidants such as vitamin E and rosemary and with natural glucosamine and chondroitin from marine and animal sources for joint and bone health. Appetitt Puppy also contains Antarctic krill providing your dog with the vital omega-3 fatty acids, EPA and DHA in the form of phospholipids. Ideal ratio between omega-3 and omega-6 fatty acids and with vitamin E for joints, skin, coat and general health. Fructo-oligosaccharides (FOS) from beet fibre for your puppy's gastrointestinal health, and beta-glucans for your puppy's overall health.



**Feeding guidelines:** The table shows daily food amounts in grammes per day, listed according to your puppy's weight and age.

DOG'S WEIGHT (kg)	1-6 months (g/day)	7-8 months (g/day)	7-12 months (g/day)	13-18 months (g/day)
1 - 3	60-130			
3 - 5	130-190			
5 - 8	190-270	150-200		
8-11	270-340	200-270		
11-15	340-410	270-330	225-320	
15-20	410-480	330-400	320-340	
20-25	480-550	400-450	340-410	305-340
25-35	550-610	450-570	410-500	340-445
35-40	610-670	570-650	500-570	445-515
40-45		650-700	570-630	515-575
45-50			630-680	575-635
50-60			680-760	635-690
60-70			760-850	690-750
70-80			850-980	750-810



# MAINTENANCE

Complete diet for adult dogs from 1 year of age

Appetitt Maintenance is a complete diet for adult dogs over 1 year of age. The food is adapted for dogs without special needs and with normal activity levels. "Normal activity" is considered as the activity level of dogs that are exercised for 1-2 hours daily without particularly high exertion.

This food has highly digestible proteins of animal and marine origin. With the exception of rice, the food is grain free and high in hydrolysed proteins. Thus, the food is low in ingredients that can lead to intolerance and allergies.

Antarctic krill supports your dog's skin, coat and joints with the essential omega-3 fatty acids, EPA and DHA in the form of phospholipids. Maintenance contains natural glucosamine and chondroitin from salmon and chicken for joints and bones. Natural vitamin E and rosemary, for skin, coat, joints and your dog's overall health. Fructo-oligosaccharides (FOS) from vegetable fibres for your dog's gastrointestinal health, and beta-glucans for general health.



## MAINTENANCE SMALL BREED - Complete diet for small breed adult dogs from 1 year of age up to 10 kg

**Feeding guidelines:** The table shows daily food amounts in grammes per day, listed according to your dog's weight and activity level.

DOG'S WEIGHT (kg)	Low activity (g/day)	Normal activity (g/day)
1 - 2	40	60
2 - 4	60	90
4 - 6	90	115
6 - 8	120	145
8 - 10	135	170

SMALL  
KIBBLE



MEDIUM  
KIBBLE



## MAINTENANCE MEDIUM BREED - Complete diet for medium size breed adult dogs from 1 year of age between 10 and 25 kg

**Feeding guidelines:** The table shows daily food amounts in grammes per day, listed according to your dog's weight and activity level.

DOG'S WEIGHT (kg)	Low activity (g/day)	Normal activity (g/day)
10	150	170
12	170	190
15	190	220
18	220	260
20	240	280
22	260	300
25	280	330



## MAINTENANCE LARGE BREED - Complete diet for adult dogs from 1 year of age over 25 kg

**Feeding guidelines:** The table shows daily food amounts in grammes per day, listed according to your dog's weight and activity level.

DOG'S WEIGHT (kg)	Low activity (g/day)	Normal activity (g/day)
25	270	310
35	340	400
45	410	480
55	480	560
65	530	640
75	650	710
85	730	800
>100	>850	>900

LARGE  
KIBBLE





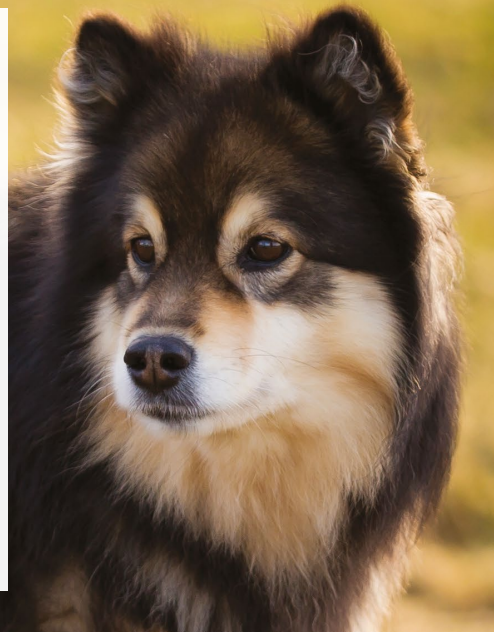
# SENSITIVE

## CHICKEN

Appetitt Sensitive Chicken is adapted for sensitive dogs and with highly digestible hydrolysed protein from chicken. This is a single protein dog food and does not contain krill. With the exception of rice, the food is grain free and high in hydrolysed proteins. Thus, the food is low in ingredients that can lead to intolerance and allergies.

Contains natural glucosamine and chondroitin from chicken for joints and bones. Natural vitamin E and rosemary, for skin, coat, joints and your dog's overall health. Fructo-oligosaccharides (FOS) from vegetable fibres for your dog's gastrointestinal health, and beta-glucans for general health.

Fructo-oligosaccharides (FOS) from vegetable fibres and mannan-oligosaccharides (MOS) for your dog's gastrointestinal health. Beta-glucans from yeast for your dog's overall health.



**SENSITIVE CHICKEN SMALL BREED- Complete diet for small breed adult dogs from 1 year of age up to 10 kg**

**Feeding guidelines:** The table shows daily food amounts in grammes per day, listed according to your dog's weight and activity level.

DOG'S WEIGHT (kg)	Low activity (g/day)	Normal activity (g/day)
1 - 2	40	60
2 - 4	60	90
4 - 6	90	115
6 - 8	120	145
8 - 10	135	170



**SENSITIVE CHICKEN MEDIUM BREED - Complete diet for medium size breed adult dogs from 1 year of age between 10 and 25 kg**

**Feeding guidelines:** The table shows daily food amounts in grammes per day, listed according to your dog's weight and activity level.

DOG'S WEIGHT (kg)	Low activity (g/day)	Normal activity (g/day)
10	150	170
12	170	190
15	190	220
18	220	260
20	240	280
22	260	300
25	280	330



**SENSITIVE CHICKEN LARGE BREED - Complete diet for large breed adult dogs from 1 year of age over 25 kg**

**Feeding guidelines:** The table shows daily food amounts in grammes per day, listed according to your dog's weight and activity level.

DOG'S WEIGHT (kg)	Low activity (g/day)	Normal activity (g/day)
25	270	310
35	340	400
45	410	480
55	480	560
65	530	640
75	650	710
85	730	800
>100	>850	>900





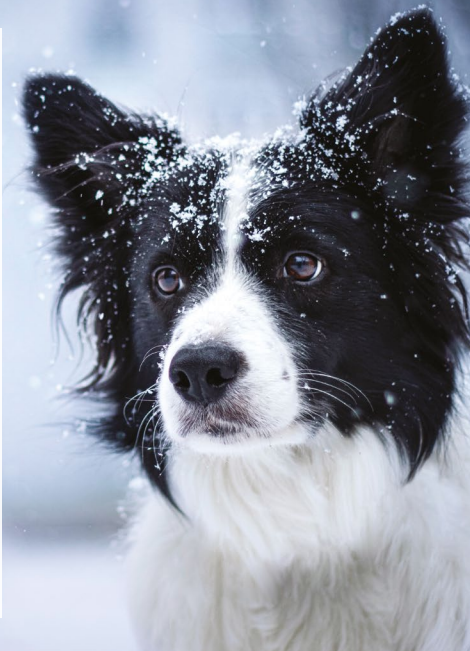
# SENSITIVE

## FISH

Appetitt Sensitive Fish is adapted for sensitive dogs and with highly digestible hydrolysed protein from fish.

This is a single protein dog food and does not contain krill. With the exception of rice, the food is grain free and high in hydrolysed proteins. Thus, the food is low in ingredients that can lead to intolerance and allergies. It contains only proteins from marine sources, making it a good option for dogs that are sensitive to chicken or other animal proteins. With the exception of rice, the food is grain free and high in hydrolysed proteins. Thus, the food is low in ingredients that can lead to intolerance and allergies.

Antarctic krill supports your dog's skin, coat and joints with the essential omega-3 fatty acids, EPA and DHA in the form of phospholipids. Contains natural glucosamine and chondroitin from fish for joints and bones. Natural vitamin E and rosemary, for skin, coat, joints and your dog's overall health. Fructo-oligosaccharides (FOS) from vegetable fibres and mannan-oligosaccharides (MOS) for your dog's gastrointestinal health. Beta-glucans from yeast for your dog's overall health.



### SENSITIVE FISH SMALL BREED - Complete diet for small breed adult dogs from 1 year of age up to 10 kg

**Feeding guidelines:** The table shows daily food amounts in grammes per day, listed according to your dog's weight and activity level.

DOG'S WEIGHT (kg)	Low activity (g/day)	Normal activity (g/day)
1 - 2	40	60
2 - 4	60	90
4 - 6	90	115
6 - 8	120	145
8 - 10	135	170



### SENSITIVE FISH MEDIUM BREED - Complete diet for medium size breed adult dogs from 1 year of age between 10 and 25 kg

**Feeding guidelines:** The table shows daily food amounts in grammes per day, listed according to your dog's weight and activity level.

DOG'S WEIGHT (kg)	Low activity (g/day)	Normal activity (g/day)
10	150	170
12	170	190
15	190	220
18	220	260
20	240	280
22	260	300
25	280	330



### SENSITIVE FISH LARGE BREED - Complete diet for large breed adult dogs from 1 year of age over 25 kg

**Feeding guidelines:** The table shows daily food amounts in grammes per day, listed according to your dog's weight and activity level.

DOG'S WEIGHT (kg)	Low activity (g/day)	Normal activity (g/day)
25	270	310
35	340	400
45	410	480
55	480	560
65	530	640
75	650	710
85	730	800
>100	>850	>900





# SENSITIVE

## LAMB AND CHICKEN

Appetitt Sensitive with Lamb and Chicken is formulated for sensitive dogs and with protein from lamb and also with highly digestible hydrolysed protein from chicken.

With the exception of rice, the food is grain free and high in hydrolysed proteins. Thus, the food is low in ingredients that can lead to intolerance and allergies.

Antarctic krill supports your dog's skin, coat and joints with the essential omega-3 fatty acids, EPA and DHA in the form of phospholipids. Contains natural glucosamine and chondroitin from fish and chicken for joints and bones. Natural vitamin E and rosemary, for skin, coat, joints and your dog's overall health. Fructo-oligosaccharides (FOS) from vegetable fibres and mannan-oligosaccharides (MOS) for your dog's gastrointestinal health. Beta-glucans from yeast for your dog's overall health.



### SENSITIVE WITH LAMB AND CHICKEN SMALL BREED - Complete diet for small breed adult dogs up to 10 kg

**Feeding guidelines:** The table shows daily food amounts in grammes per day, listed according to your dog's weight and activity level.

DOG'S WEIGHT (kg)	Low activity (g/day)	Normal activity (g/day)
1 - 2	40	60
2 - 4	60	90
4 - 6	90	115
6 - 8	120	145
8 - 10	135	170



### SENSITIVE WITH LAMB AND CHICKEN MEDIUM BREED - Complete diet for medium size breed adult dogs from 1 year of age between 10 and 25 kg

**Feeding guidelines:** The table shows daily food amounts in grammes per day, listed according to your dog's weight and activity level.

DOG'S WEIGHT (kg)	Low activity (g/day)	Normal activity (g/day)
10	150	170
12	170	190
15	190	220
18	220	260
20	240	280
22	260	300
25	280	330



### SENSITIVE WITH LAMB AND CHICKEN LARGE BREED - Complete diet for large breed adult dogs from 1 year of age over 25 kg

**Feeding guidelines:** The table shows daily food amounts in grammes per day, listed according to your dog's weight and activity level.

DOG'S WEIGHT (kg)	Low activity (g/day)	Normal activity (g/day)
25	270	310
35	340	400
45	410	480
55	480	560
65	530	640
75	650	710
85	730	800
>100	>850	>900





# SKIN & COAT

Complete diet for adult dogs from 1 year of age

Appetitt Skin & Coat is rich in highly digestible proteins of animal and marine origin. It contains a special formula of biotin, methionine, fatty acids and organic zinc ideal for your dog's skin and coat.

With the exception of rice, the food is grain free and high in hydrolysed proteins. Thus, the food is low in ingredients that can lead to intolerance and allergies. Appetitt Skin & Coat also contains Antarctic krill providing your dog with the vital omega-3 fatty acids, EPA and DHA in the form of phospholipids and with natural antioxidants such as vitamin E and rosemary.

Natural glucosamine and chondroitin from marine and animal sources contribute to joint and bone health. Fructo-oligosaccharides (FOS) from vegetable fibres and mannan-oligosaccharides (MOS) from yeast for your dog's gastrointestinal health and beta-glucans from yeast for your dog's overall health.



**Feeding guidelines:** The table shows daily food amounts in grammes per day, listed according to your dog's weight and activity level.

DOG'S WEIGHT (kg)	Low activity (g/day)	Normal activity (g/day)
3	55	70
5	80	100
10	140	160
15	190	210
20	240	270
25	280	330
30	320	370
35	360	410
40	400	450
45	430	490
50	470	520
55	500	550
60	530	600
70	600	690
80	670	780



# ENERGY

Complete diet for active adult dogs

Appetitt Energy is formulated for highly active adult dogs. The feed has a high content of protein and fat of animal and marine origin, with high digestibility and with a high energy content. Combined with carnitine, the high fat content stimulates increased burning of fatty acids.

With the exception of rice, the food is grain free and high in hydrolysed proteins. Thus, the food is low in ingredients that can lead to intolerance and allergies. With natural antioxidants such as vitamin E and rosemary and with natural glucosamine and chondroitin from salmon and chicken for joint and bone health. Antarctic krill supports your dog's skin, coat and joints with the essential omega-3 fatty acids, EPA and DHA in the form of phospholipids. Fructo-oligosaccharides (FOS) and mannan-oligosaccharides (MOS) for digestion and beta-glucans from yeast for the overall health of your dog.



**Feeding guidelines:** The table shows daily food amounts in grammes per day, listed according to your dog's weight and activity level.

DOG'S WEIGHT (kg)	Moderate activity (1-3 hours per day) (g/day)	High activity (3-6 hours per day) (g/day)
10	150	180
15	180	270
20	240	310
25	310	380
30	350	440
35	390	490
40	430	530
45	470	570
50	500	610
55	530	680
60	580	730
70	670	850
80	750	930
90	840	1000



# Meet two of our ambassadors!

The siblings Yvette and Yngve Hoel grew up in Hadeland, Norway and have been dog sledding all their lives. In total, they have five dogs that are a mix of German pointer, English pointer and greyhound breeds. The siblings compete in

Nordic-style races and bare ground races and have been world champions for many years. In total, they have 72 medals from the World Championships and European Championships, including 17 World Championship gold medals.



*The right food is essential for dogs to function optimally both in everyday life and in a competitive context. Our dogs get Appetitt both as a regular meal and as a nutrient replenishment in connection with exercise. The dogs love it - and the food disappears in record time!*



# EXTREME

Complete diet for highly active adult dogs

Appetitt Extreme is formulated for highly active dogs with high calorie needs. High content of fats, prebiotic substances and easily digestible proteins of animal and marine origin to help your dog achieve peak performance during high-energy events such as strenuous training and hunting. Combined with carnitine, the high fat content stimulates increased fatty acid burning.

With the exception of rice, the food is grain free and high in hydrolysed proteins. Thus, the food is low in ingredients that can lead to intolerance and allergies. With the exception of rice, the food is grain free and high in hydrolysed proteins. Thus, the food is low in ingredients that can lead to intolerance and allergies. With natural antioxidants such as vitamin E and rosemary and with natural glucosamine and chondroitin from salmon and chicken for joint and bone health. Antarctic krill supports your dog's skin, coat and joints with the essential omega-3 fatty acids, EPA and DHA in the form of phospholipids. Fructo-oligosaccharides (FOS) and mannan-oligosaccharides (MOS) for digestion and beta-glucans from yeast for the overall health of your dog.



**Feeding guidelines:** The table shows daily food amounts in grammes per day, listed according to your dog's weight and activity level.

DOG'S WEIGHT (kg)	High activity, hunting, training and running (3-6 hours per day) (g/day)	High activity, hunting, training and running (more than 6 hours per day) (g/day)
10	160	280
15	200	385
20	260	490
25	310	570
30	350	650
35	400	745
40	450	835
45	520	900
50	590	985
55	650	1050
60	710	1130



# LIGHT

Complete diet for adult dogs that gain weight easily or suffer from obesity

Appetitt Light is formulated for dogs that are overweight or prone to weight gain. The food has a moderate fat content and the carefully adapted level of dietary fibre makes it easier to control your dog's calorie intake. Appetitt Light contains carnitine, which might have a positive effect on energy and fat metabolism. Psyllium husk from psyllium seeds is high in fermentable and water-soluble fibres and might contribute to good gastrointestinal function. Psyllium has very good water-binding ability and other swelling properties. It might thus also contribute to increased satiety.

With the exception of rice, the food is grain free and high in hydrolysed proteins. Thus, the food is low in ingredients that can lead to intolerance and allergies. With natural antioxidants such as vitamin E and rosemary and with natural glucosamine and chondroitin from salmon and chicken for joint and bone health. Antarctic krill supports your dog's skin, coat and joints with the essential omega-3 fatty acids, EPA and DHA in the form of phospholipids. Fructo-oligosaccharides (FOS) and mannan-oligosaccharides (MOS) for digestion and beta-glucans from yeast for the overall health of your dog.



**Feeding guidelines:** The table shows daily food amounts in grammes per day, listed according to your dog's weight and activity level.

DOG'S WEIGHT (kg)	Overweight (g/day)	Moderate overweight (g/day)
5	70	95
10	130	190
15	190	230
20	220	270
25	300	380
30	340	420
35	370	460
40	400	510
45	450	550
50	530	590
55	590	640
60	650	680
65	710	720



# SENIOR

Complete diet for senior dogs older than 7 years

Appetitt Senior is formulated and balanced to meet the needs of senior dogs. The ageing process in dogs varies and the transition to a senior food must be assessed individually for each dog. The food has a moderate protein content.

Carnitine contributes to energy and fat metabolism and may reduce the risk of obesity. Psyllium husk from psyllium seeds is high in fermentable and water-soluble fibres and might contribute to good gastrointestinal function. Psyllium has very good water-binding ability and other swelling properties. It might thus also contribute to increased satiety.

Except for rice, the food is grain free and high in hydrolysed proteins. Thus, the food is low in ingredients that can lead to intolerance and allergies. With natural antioxidants such as vitamin E and rosemary and with natural glucosamine and chondroitin from salmon and chicken for joint and bone health. Antarctic krill supports your dog's skin, coat and joints with the essential omega-3 fatty acids, EPA and DHA in the form of phospholipids. Fructo-oligosaccharides (FOS) and mannan-oligosaccharides (MOS) for digestion and beta-glucans from yeast for the overall health of your dog.

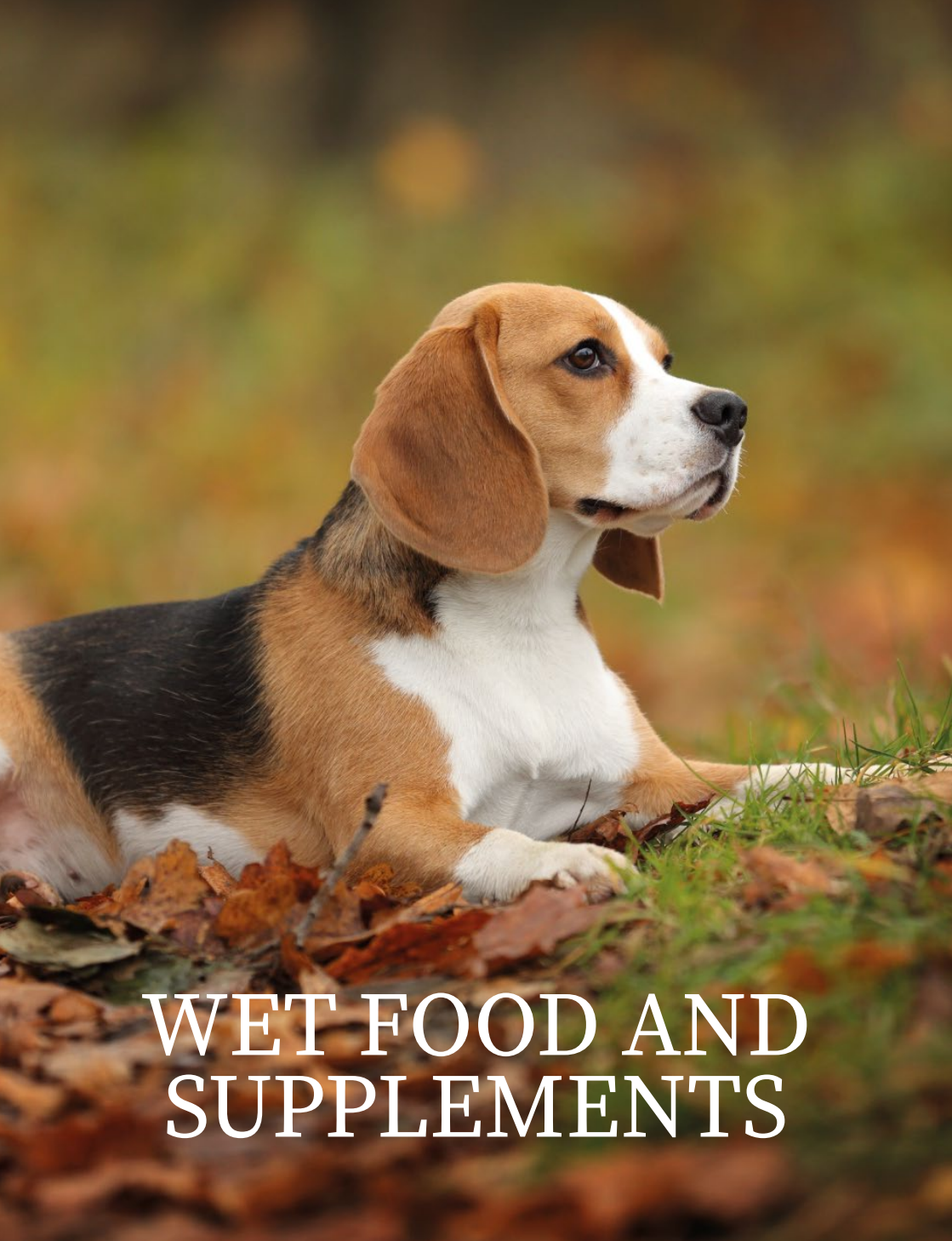


**Feeding guidelines:** The table shows daily food amounts in grammes per day, listed according to your dog's weight and activity level.

DOG'S WEIGHT (kg)	Low activity (g/day)	Normal activity (g/day)
5	80	90
10	145	155
15	190	205
20	230	245
25	270	285
30	300	320
35	340	365
40	370	400
45	400	440
50	440	480
55	480	510
60	520	545
65	560	590
70	610	640
80	690	720







# WET FOOD AND SUPPLEMENTS



## Appetitt Lunch Paté (150 g)

Complete dog food. Appetitt Lunch is a very tasty wet dog food with a relatively high protein-to-fat ratio. It can be used as a complete food or in combination with dry food for dogs that need extra protein. The food is very tasty and works well as an appetite enhancer. Appetitt Lunch can be fed to dogs with a normal activity level according to the following recommendations.



## Appetitt Energy Paté (150 g)

Appetitt Energy is a very tasty supplementary food that can replace up to 20 % of daily dog food intake (based on weight). Appetitt Energy is a supplementary food for dogs and should not be your dog's only source of nutrition. Its use is recommended in combination with high-calorie dry food for dogs that need extra energy, e.g., during hunting or in extensive training periods. This wet dog food can also be used for dogs that need to gain weight. Serve at room temperature.



## Appetitt Freeze-dried rumen

Freeze-dried rumen from Norwegian cattle has very good palatability and a high calorie content. Ideal as a food supplement for dogs maintaining a high activity level, such as during training, hunting and running. Allow the food to swell for 20 minutes before giving it to the dog. Freeze-dried rumen is not a complete dog food and should not exceed 50 % of your dog's daily ration (based on weight) over time.



## Appetitt stockfish

Appetitt stockfish is made from 100 % Norwegian saithe. Stockfish is a natural source of omega-3 and can be used as a reward or snack, for example after training or on walks in the woods. Stockfish should not be given to dogs that devour their food without chewing.

# Appetitt wetfood for dogs

Appetitt sausages for dogs are made from Swedish ingredients, 100% animal protein and contains no grain raw materials. Contains no artificial preservatives, flavorings or colourings.



## Appetitt Puppy (800 g)

Complete diet for puppies that meet the nutritional needs of puppies up to 1 year of age. Appetitt Puppy sausage has a balanced vitamin and mineral content suitable for use as a complete diet, but the feed can also be used in combination with dry food. Contains animal products 82% (chicken, pork and beef), potato, carrot, pea fibre, vitamins and minerals.

Body weight/kg	1-4 months Gram/day	4-12 months Gram/day
1-3	145-330	97-220
3-5	330-480	220-320
5-8	480-690	320-460
8-10	690-815	460-540
10-15	815-1100	540-740
15-20	1100-1620	740-1080



## Appetitt Maintenance with fish and potato (800 g)

Complete diet for adult dogs. Appetitt Maintenance Fish & Potato has an energy and nutritional content that meets the requirements of adult dogs from 1 year of age and with a normal level of activity. Contains animal and marine products 76% (36 % Fish (cod, salmon), pork, pork liver, chicken, beef), water, potato, carrot, pea fiber, vitamins and minerals.

Body weight/kg	Gram/day Low-Normal activity
5	220-250
10	370-430
15	500-580
20	620-720
30	840-970
40	1050-1200

**Feeding guide:** The feeding guide gives the average amount of daily feed related to body weight. The feed amount may vary +/- 20 % depending on activity level. Your dog should always have access to fresh drinking water.



## Appetitt Maintenance with chicken and potato (800 g)

Complete diet for adult dogs. Appetitt Maintenance Chicken & Potato has an energy and nutritional content that meets the requirements of adult dogs from 1 year of age and with a normal level of activity. Contains 76% animal products (chicken 48%, pork liver, pork, beef), water, potato, carrot, pea fiber, vitamins and minerals.

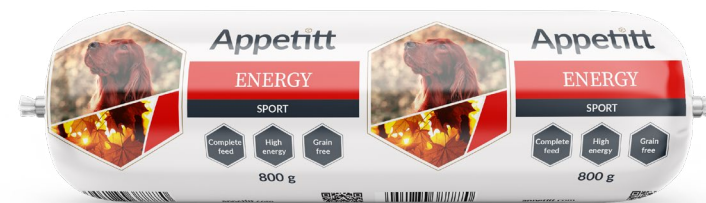
Body weight/kg	Gram/day Low-Normal activity
5	220-250
10	370-430
15	500-580
20	620-720
30	840-970
40	1050-1200



## Appetitt Light (800 g)

Complete diet for adult dogs from 1 year of age. Appetitt Light is suitable for dogs that are overweight or easily gain weight. The feed has a moderate fat content. Contains 56% animal products (chicken, turkey, pork liver, beef), carrot, potato, water, pea fiber, vitamins and minerals.

Body weight/kg	Gram/day Low-Normal activity
5	240-280
10	410-480
15	550-650
20	680-800
30	920-1100
40	1150-1350



## Appetitt Energy Sport (800 g)

Complete food for adult dogs from 1 year of age. Appetitt Energy Sport is suitable for active adult dogs. The feed has a high energy content and can be used both as complete feed or as supplementary feeding/snack during high activity. Contains 81% animal and marine products (chicken, salmon, pork, pork liver, beef), water, potato, pea fiber, carrot, vitamins and minerals.

Body weight/kg	Gram/day Normal-High activity
5	220-250
10	360-420
15	500-560
20	620-700
30	830-950
40	1040-1180







03-2023

# Appetit

Enriched by Norwegian nature



[appetit.com/en/](https://appetit.com/en/)



Appetit - Super Premium Food for cats and dogs